



APPLICATION GUIDELINES

RASCOjoint TPE Waterbar

GENERAL

- Use 1 mm or 2 mm waterbar for construction joints; always use 2 mm waterbar for movement joints
- For movement joints, always ensure that joint can move freely
- Always remove laitance
- Ensure that base is dry and free from dust, oil, grease and loose particles
- Minimum base temperature of +5°C during application

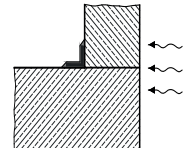
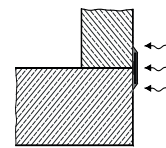
PERSONAL PROTECTIVE EQUIPMENT

- Wear suitable protective gloves and goggles
- Keep eyewash bottle at hand



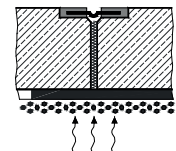
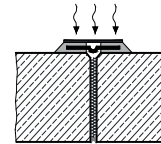
INCORPORATION IN CONSTRUCTION JOINTS

- Apply waterbar to wet side, wherever possible
- For water pressures not exceeding 1 bar, waterbar may also be bonded to dry side without any ancillary measures



INCORPORATION IN MOVEMENT JOINTS

- Apply waterbar to wet side, wherever possible
- For water pressures not exceeding 0.3 bar (up to 2 cm joint width), waterbar may also be bonded to dry side without any ancillary measures



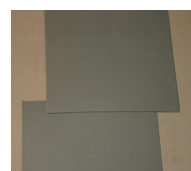
FIXING

- Remove laitance from base (e.g. by grinding)
- Apply RASCObond adhesive filler (full waterbar width); the bond surface shall be min. 8 cm on either side
- Embed waterbar and press down to remove all voids (entrapped air forms passages for water)
- For **construction joints**, overcoat at least perimeter zones of waterbar (or, preferably, whole waterbar) with epoxy adhesive
- For **movement joints**, ensure that waterbar is kept free of adhesive in area of joint when overcoating with epoxy adhesive
- When meeting **high aesthetic** demands, mask perimeter of bond surface with adhesive tape, bond waterbar and coat with epoxy adhesive, smoothen surface with brush and cleaning agent to achieve neat finish and remove adhesive tape



JOINTS

- Provide for 1 - 2 cm overlap at end joints
- Weld together using hot-air apparatus (approx. 180°C for 1 mm and approx. 240°C for 2 mm waterbar) and silicone/brass roller



EXTERNAL ANGLES

- Make a cut, at angle, into middle of waterbar parallel to line of wall
- Cut make-up piece to size, fit and weld on



INTERNAL ANGLES

- Lay waterbar in angle
- Fold down projecting fl ap on one side and weld together resulting three layers of waterbar



PROTECTION FOR WATER SIDE (DIRECT WATER PRESSURE)

- Press extruded polystyrene, crumb rubber mats or the like directly into epoxy adhesive
- Metal sheet or mortar may also be used as protection, depending on situation and exposure



PROTECTION FOR NON-WATER SIDE

- Waterbar shall be protected against mechanical or wilful damage
- Metal sheet or mortar may also be used as protection, depending on situation and exposure



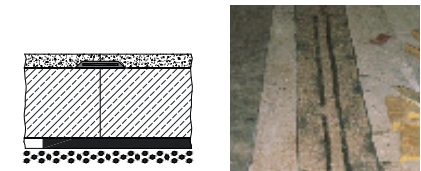
TIE BOLT LOCATIONS

- Roughen base and apply adhesive
- Apply and press on waterbar (10x10 cm)
- Overcoat waterbar with adhesive



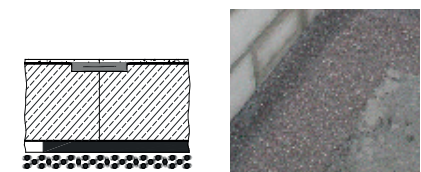
COATINGS > 2 CM (E.G. SCREED, GRANOLITHIC CONCRETE)

- Bond waterbar, fully coat with epoxy adhesive and blind with coarse quartz sand



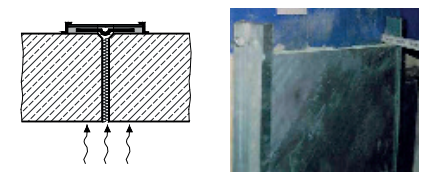
COATINGS < 2 CM (E.G. RESIN FLOORING)

- For thin overlays, use concrete insert to form recess for installation of waterbar
- Bond waterbar, fully coat with epoxy adhesive and blind with coarse quartz sand



SUPPORTING MATRIX

- The supporting matrix shall be designed so as to permanently guarantee the free movement of the joint



EN B 04.12.14 SAH

2 | 2

RASCOR

LEGAL NOTICE: The information provided on the use and application of our products in this technical data sheet is based on the present state of our knowledge. The customer shall bear sole responsibility for the proper specification, application and use of the products in line with the intended purpose, project-specific conditions and external actions. The most recent technical data sheet shall apply. The current technical data sheets are available at www.rascor.com. Our General Terms of Business shall form an integral part of this technical data sheet.

Rascor International Ltd.
Gewerbstrasse 4
CH-8162 Steinmaur / Switzerland
Phone: +41 (0)44 857 11 11
Fax: +41 (0)44 857 11 00
www.rascor.com